



Workshop in Diagnostic Immunohistochemistry
Aalborg University Hospital, September 19th–21st 2018



AALBORG UNIVERSITY HOSPITAL
Aalborg Culture & Congress Centre

Welcome to Aalborg

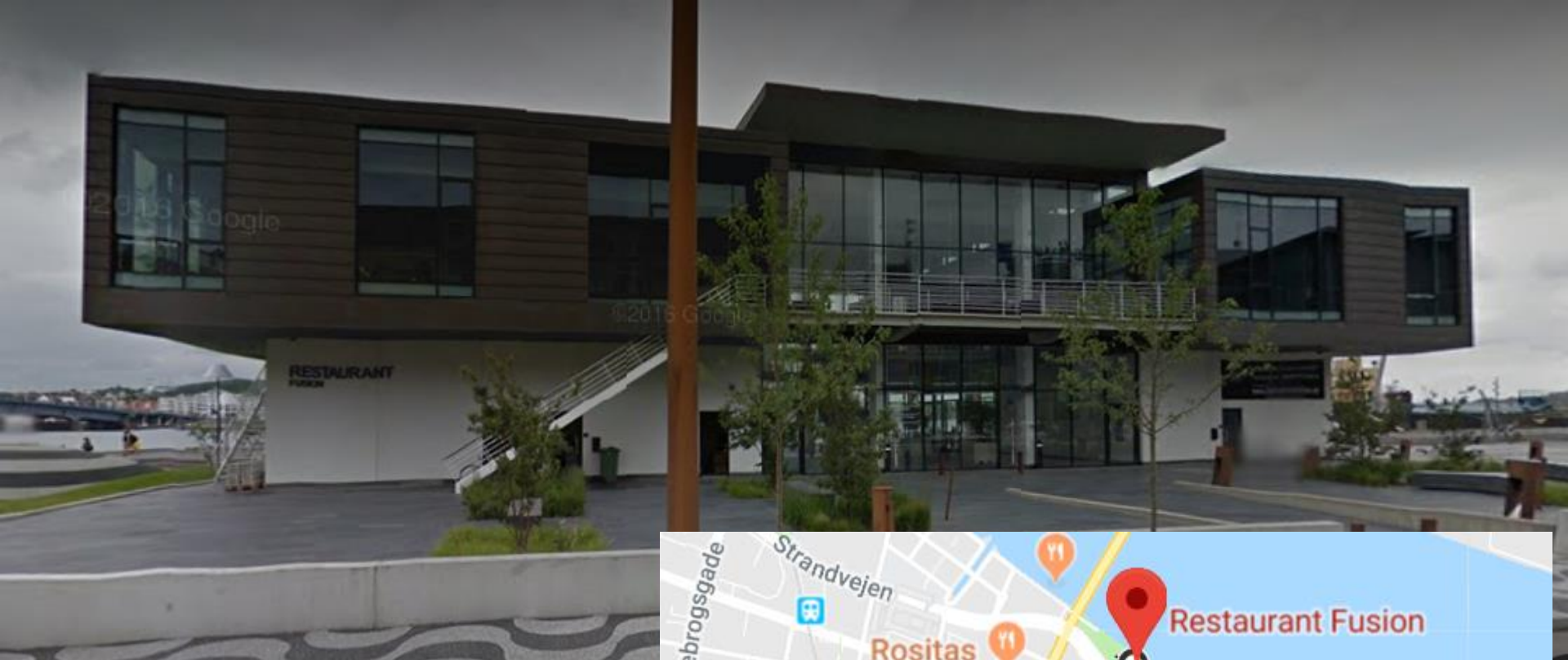
Programme

Wednesday, September 19th

09:15 – 10:00		<i>Arrival and registration, coffee</i>
10:00 – 10:10	10	Welcome – Introduction
10:10 – 10:50	40	NordiQC external quality assurance in IHC
10:55 – 11:35	40	IHC principles: The technical test approach – pre-analytical phase I
11:40 – 12:20	40	IHC principles: The technical test approach – pre-analytical phase II
12:25 – 13:15	50	<i>Lunch</i>
13:15 – 13:55	40	IHC principles: The technical test approach - analytical phase I
14:00 – 14:40	40	IHC principles: The technical test approach - analytical phase II
14:45 – 15:05	20	<i>Coffee</i>
15:05 – 15:45	40	IHC principles: Selection and interpretation of controls
15:50 – 16:00	10	Discussion
16.15 – 18.00		<i>Social arrangement (optional)</i>

Thursday, September 20th

08:30 – 09:10	40	The unknown primary tumour: IHC classification – part I, the primary panel
09:15 – 09:55	40	The unknown primary tumour: IHC classification – part II, secondary panels
10:00 – 10:20	20	<i>Coffee</i>
10:20 – 11:00	40	Lung cancer: IHC classification
11:05 – 11:35	30	Lung cancer: Antibody selection, protocols and controls
11:40 – 12:20	40	Breast cancer: IHC classification
12:25 – 13:15	50	<i>Lunch</i>
13:15 – 13:45	30	Breast cancer: Antibody selection, protocols and controls
13:50 – 14:30	40	Haematolymphoid neoplasms: IHC classification
14.35 – 14:55	20	<i>Coffee</i>
14:55 – 15:35	40	Haematolymphoid neoplasms: Antibody selection, protocols and controls
15:40 – 16:00	20	Discussion
18:30 –		<i>Workshop Dinner (Restaurant Fusion, Strandvejen 4)</i>



Restaurant FUSION Strandvejen 4



Friday, September 21st

08:30 – 09:10	40	IHC double stains – overview, considerations and applications
09:15 – 09:55	40	Immunocytochemistry; IHC on frozen sections – overview, considerations and applications
10:00 – 10:20	20	<i>Coffee</i>
10:20 – 11:00	40	IHC stainers – overview, pros and cons
11:05 – 11:45	40	Digital image analysis in IHC - overview, considerations and applications
11:45 – 12:00	15	Discussion and evaluation
12:00 – 12:50		<i>Lunch (on-site and to-go), departure</i>



AALBORG UNIVERSITY HOSPITAL

Aalborg Harbour Front



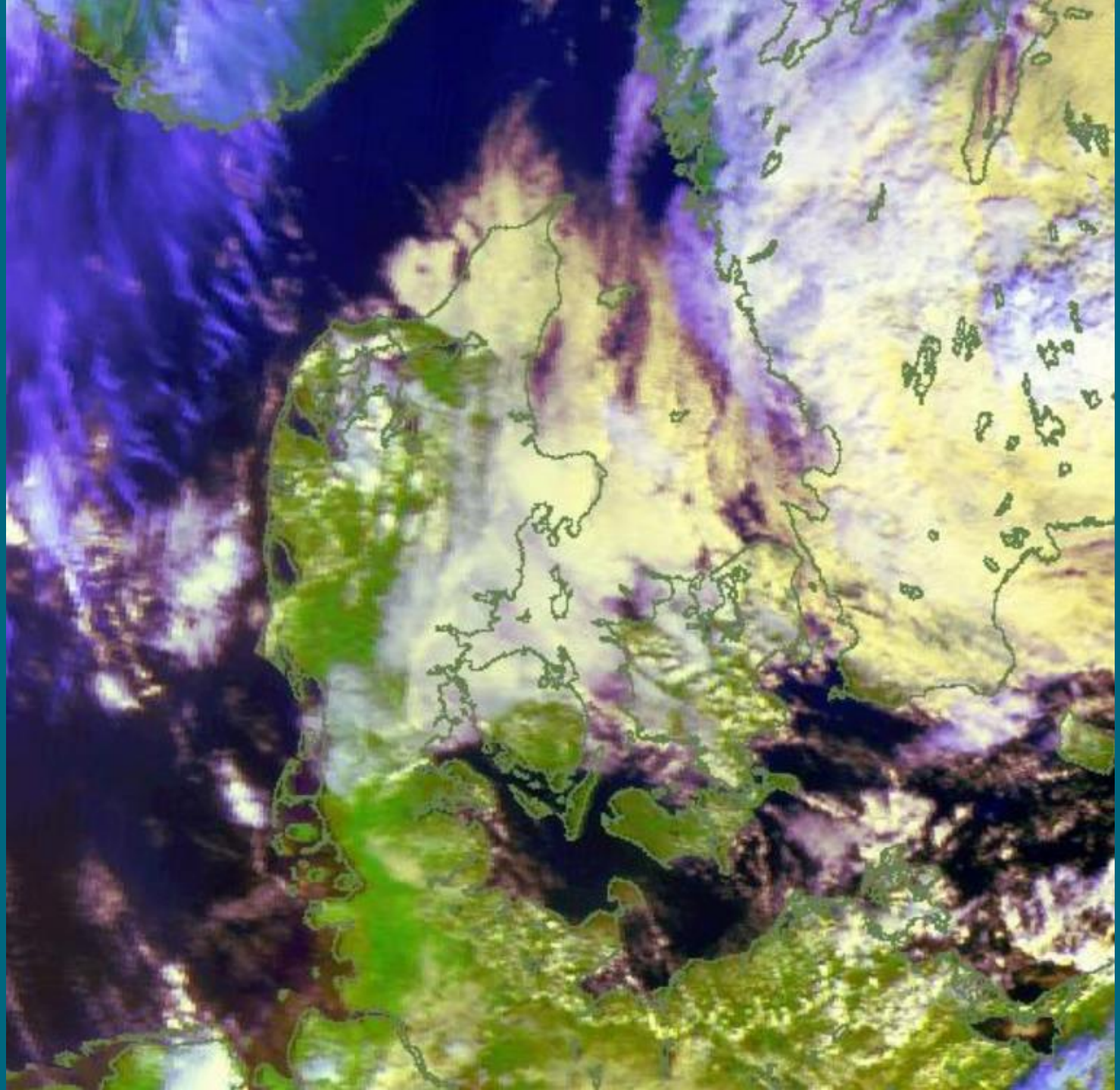
Aalborg House of Music



Budolfi Church







**“Immunohistochemistry is technically complex,
and no aspect of this complexity can be ignored,
from the moment of collecting the specimen
to issuance of the final report”**

(Clive Taylor, 2000)

Welcome to Aalborg