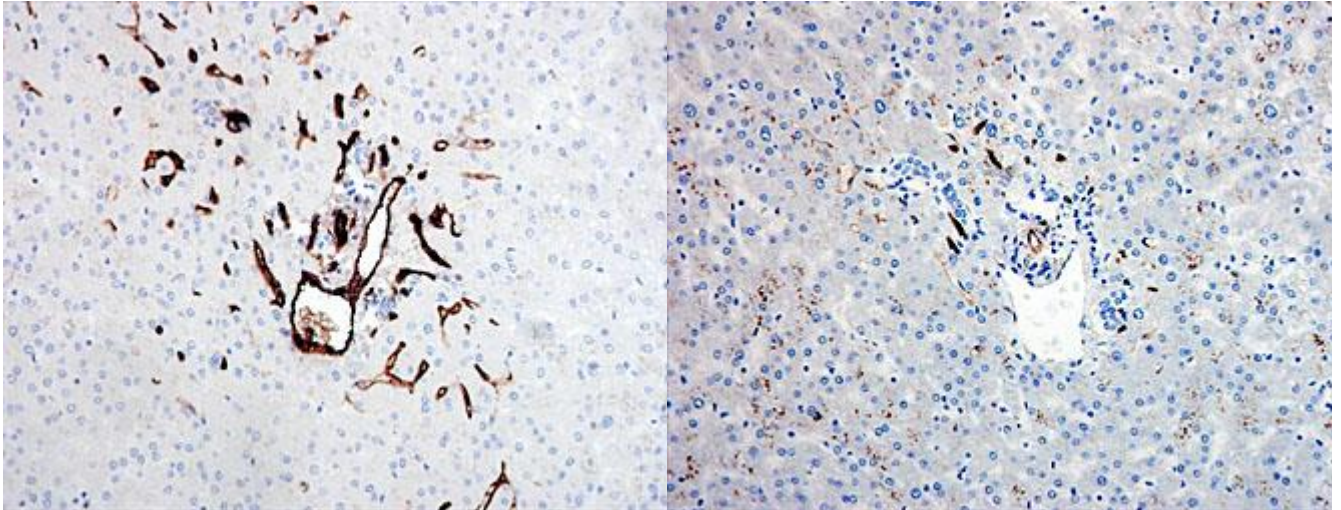


Four laboratories participated. Two protocols gave a good staining, two gave an acceptable staining. The difference was considered mainly due to differences in epitope retrieval methods.



Lab. a
Normal liver stained for CD34 using a good protocol. Endothelial cells are intensely stained in the portal tract and sinusoids in zone 1.

Lab. b
Normal liver (same field as in Lab. a) stained for CD34 using an acceptable protocol. The staining is, however, somewhat weaker than in Lab. a.

SN/MV/LE 1-4-2007