

Scheme 2019, Assessment Run H15

HER-2 ISH (BRISH or FISH)

Aalborg, 14th December 2018

Dear participant

Pairs of unstained slides have been sent according to your submitted protocols for this run. If you are in any doubt, please read the details on the website: www.nordiqc.org, or send us an e-mail: nordiqc@rn.dk. Also inform us if slides are missing.

Please note your participant number (NQC...) shown on the address label. This number **must** be indicated on all new slide labels and used for any communication with NordiQC.

HER-2 FISH: Stain the sections according to your protocol; score the HER-2 FISH reactions using the electronic scoring sheet on the web site (login and choose “scoring sheet” in the “options”-menu on the right), not later than **13th February**.

Do not return the FISH-stained slides to NordiQC.

HER-2 BRISH: Stain the sections according to your protocol, score the HER-2 BRISH reactions using the electronic scoring sheet on the web site (login and choose “scoring sheet” in the “options”-menu on the right), and return one stained slide - marked with your participant number - to NordiQC at the above address not later than **13th February**. Keep the remaining NordiQC slide to serve as a control set.

In-house controls shall, if possible, be placed on the NordiQC slide. Batch in-house controls (separate control slides) shall not be submitted to NordiQC.

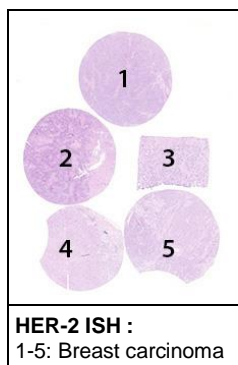
Submitted HER-2 BRISH slides are stored by NordiQC for future documentation and will not be returned to the laboratories. However, the laboratories can request their stained sections for review in case their control set is lost.

The results are communicated on the website on 20th April. Examples of optimal as well as insufficient stains will be illustrated (anonymously) and the corresponding methods described. Monographs describing the proteins/genes and the expected staining patterns are available on the website.

Also on 20th April individually results will be available on the homepage and for BRISH (particularly in case of borderline or poor marks) comments to the stains and suggestions for protocol improvement.

Contents of the multitissue sections

Top row closest to the glass label.



Before returning the stained slides to NordiQC it is mandatory that you fill out and submit the electronic scoring sheet for HER-2 ISH on the web site (login and choose “scoring sheet” in the “options”-menu on the right).