

Scheme 2010, Assessment Run B10 IHC

Aalborg, 20th September 2010

Dear participant

Please find enclosed pairs of unstained sections according to your submitted protocols for this run. If you are in any doubt, please read the details on the website: www.nordiqc.org, or send us an e-mail: nordiqc@rn.dk. Also inform us if slides are missing.

Please note your three digit participant number (NQC...) shown on the address label and slides. This number **must** be indicated on all new slide labels and used for any communication with NordiQC.

Stain the sections according to your protocols, and return one stained slide for each marker (one ER and one HER-2 slide) together with your own control slide(s) marked with your participant number. Together with the HER-2 stain please also send the **scoring sheet** - marked with your participant number - to NordiQC at the above address not later than **5th October**. Keep the remaining NordiQC slides in your file to serve as a control set.

Submitted sections (including in-house controls) are stored in the NordiQC file for future documentation and will not be returned to the laboratories. However, the laboratories can request their stained sections for review in case their control set is lost.

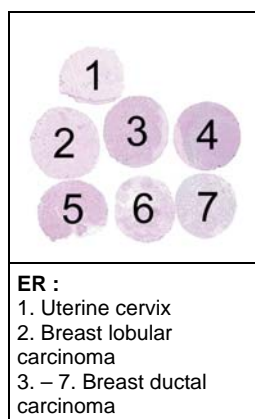
All stained slides submitted before deadline will be assessed, and the general results communicated on the website about 7th December. Examples of optimal as well as insufficient stains will be illustrated (anonymously) and the corresponding methods described. The origin of recommended protocols giving optimal results will be published, unless anonymity is requested.

About 7th December each laboratory receive an e-mail with their individual assessment scores and (when needed) comments to the stains and suggestions for protocol improvement.

Monographs describing the markers are available on the website.

Contents of the multitissue sections

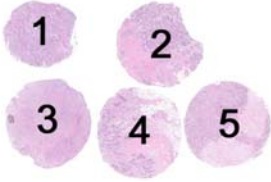
Top row closest to the glass label.



Scoring sheets next page ...

**Scoring sheet: Fill out and send to NordiQC together with the stained slides
(keep a copy in your lab)**

HER-2 IHC:

Label		HER-2 score* 0, 1+, 2+, 3+	Comments
	1. Breast ductal carcinoma		
	2. Breast ductal carcinoma		
	3. Breast ductal carcinoma		
	4. Breast ductal carcinoma		
	5. Breast ductal carcinoma		

Content of the multitissue sections for HER-2 IHC

***) Guidelines how to score/interpret the IHC HER-2 result:**

Score 0	No staining is observed or cell membrane staining is observed in less than 10% of the tumour cells.
Score 1+	A faint perceptible membrane staining can be detected in more than 10% of the tumour cells. The cells are only stained in part of their membrane.
Score 2+	A weak to moderate complete membrane staining is observed in more than 10% of the tumour cells.
Score 3+	A strong complete membrane staining is observed in more than 30% of the tumour cells.

Best regards
NordIQ